

Eretz Yisrael Yafa

Moderately

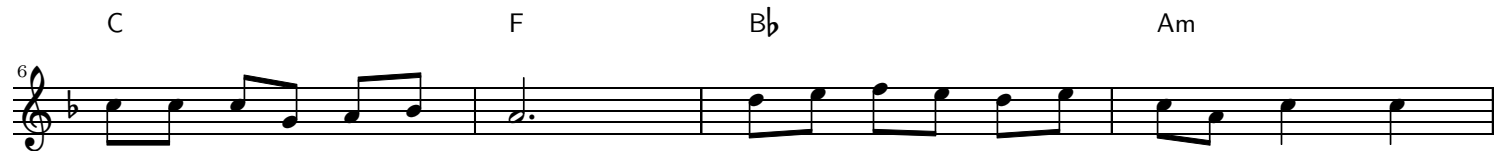
B \flat Winds



Na - a - ra to - va y' - fat e - na - yim la - nu yesh b' - e - rets



Yis - re - el v' - "ye - led tov Y' - ru - sha la - yim" ho



mi pi - lel u - mi mi - letl v' - to - ra o - ra ka - zo yesh la - nu



v' - gam ha ga - da u - m' - gi - la v' - E - lo - him e chad she -



la - nu v' - kol cha - tan v' - kol ka - la E - rets Yis - ra -



el ya - fa E - rets Yis - ra - eil po - ra - chat at yosh - va ba



v' - tso - fra at tso - fa ba v' - zo - ra - chat